



Advinion

Copyright © 2011

Professional Chart V2.6 Help

Help Manual V. 1.0
– Advinion Ltd.

www.Advinion.com

Chart's Site: www.tradeandchart.com

Customer Support
Phone: + 972 (9) 744 0787
support@advinion.com



TABLE OF CONTENTS

- 1. Introduction.....3
 - 1.1 Symbol.....3
 - 1.2 Panel.....3
- 2. Menu.....4
 - 2.1 Majors.....4
 - 2.2 Instruments.....4
 - 2.3 Chart Type.....6
 - 2.4 Time Scale.....6
 - 2.4 Studies.....7
 - 2.5 Drawing.....9
 - 2.6 View.....10
 - 2.7 Help.....11
- 3. Toolbar.....12
 - 3.1 Current Activity.....12
 - 3.2 Chart Type.....12
 - 3.3 Time Scale.....12
 - 3.4 Zoom.....12
 - 3.5 Drawing.....12
 - 3.6 Systems.....13
 - 3.7 Crosshair.....14
 - 3.8 Delete.....14
 - 3.9 Print and Capture.....14
 - 3.10 Detach.....14
- 4. Work Area.....15
 - 4.1 Work Area Title.....15
 - 4.2 Panels.....16
 - 4.3 Zoom - Date-Time Range selector.....17
 - 4.4 Drawing.....18
 - 4.5 Selecting and Resizing Drawing Parts.....19
 - 4.6 Delete Drawing Parts.....19
 - 4.7 Edit Drawing Parts.....20



1. Introduction

This document provides a detailed overview of Advinion Professional Chart Version 2.6 web-tool features and usage.

1.1 Symbol

This document uses the word "Symbol" to describe a single security, where a security is a fungible, negotiable instrument representing financial value. Securities are broadly categorized into debt securities (such as banknotes, bonds and debentures), equity securities; e.g., common stocks, and derivative (finance) contracts such as forwards, futures, options and swaps...

1.2 Panel

The chart display area is composed of one or more panels. Each panel displays a group of studies. The basic chart display is a single panel with a price graph.

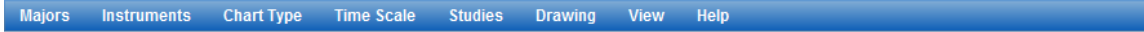
A more advance display can be a panel with price graph and two panels, one for RSI studies group and the second for MACD studies group.

Each panel can display more than one study type.

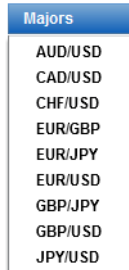


2. Menu

This section describes the chart's menu.



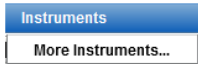
2.1 Majors



This menu contains the web-site / application preferred symbols. Use this menu to quick access any of the favorites symbols.

Depending on the chart's width another sub-menu "more instruments..." might appear inside this menu and will allow access to the rest of the symbols. Otherwise this menu appears on a separate menu (see 2.2)

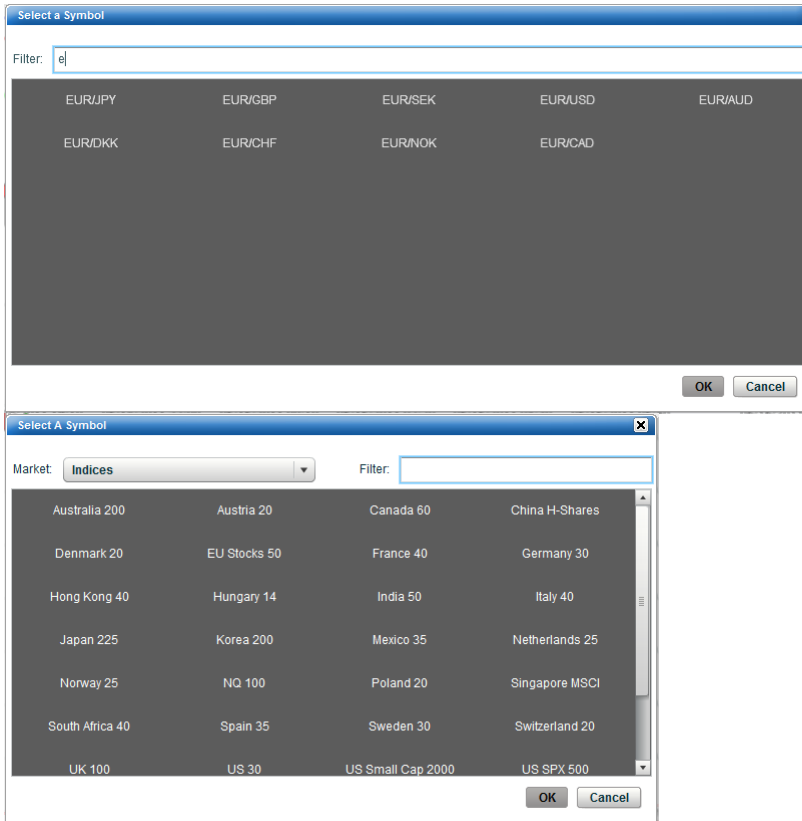
2.2 Instruments



Use menu to access to all the available symbols from the chart's data-feed. It will open the "symbol selection" FORM and let you choose from the list of all symbols.



2.2.1 Symbol Selection Form



This form has a "Market" filter whenever the feed has more than one market type. The first example displays a single market form (FOREX), while the second example shows multiple market form (FUTURES).

Use the "Market" filter to show only symbol which belong to a specific market.

Use the second filter to show only symbols which start with a specific set of letters.

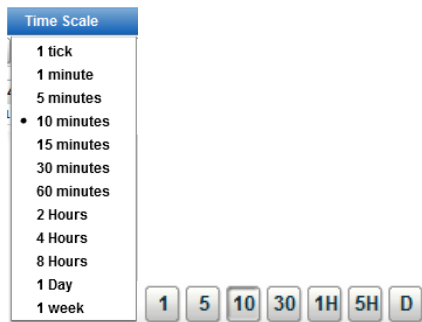


2.3 Chart Type



Use this menu to change the way you see the price graph. The possible options are "Open-High-Low-Close", "Candlesticks", "Line" or "Area". A short cut is also available from the toolbar.

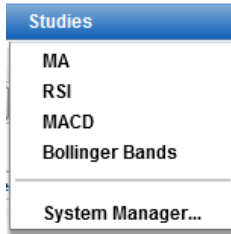
2.4 Time Scale



Use this menu to access to all available time-scales. You can view the chart in several groups of minutes and hours, in days, weeks and months. Shortcuts to some of the time-scale are available via the toolbar. Since the time-scales are customizable per site it is possible that the Chart you are using may have different set of time-scales.



2.4 Studies

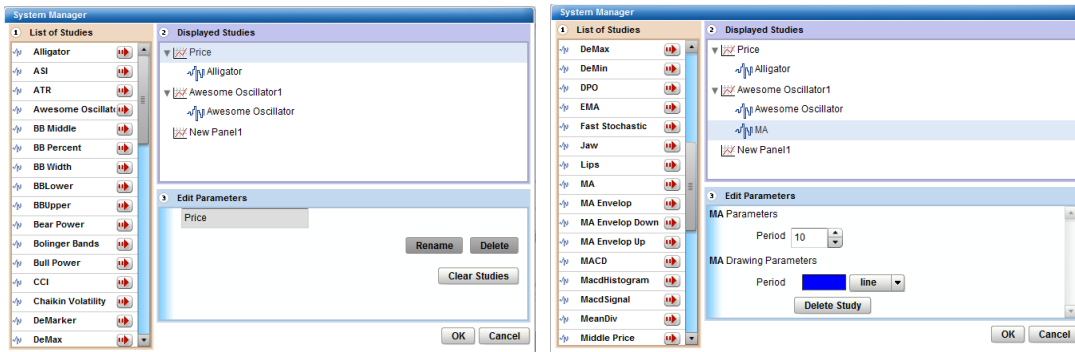


Use this menu to access to all available studies you can plot on the chart. The top list is short-list of mostly used studies. Select a study to quickly plot it on a new panel in the chart.

Use the "System Manager" menu entry to access the entire studies list. This form will let you add, edit or delete studies and edit their parameters.



2.4.1 System Manager Form



Use this form to define each study and its parameters.

Assign a study to a panel by selecting it from the "Displayed Studies" window and pressing the red arrow (🔴) next to the required study.

Edit a panel by selecting the panel from the "Displayed Studies" and edit the parameters in the "Edit Parameters" window.

By pressing the "Rename" button you will change the panel's name.

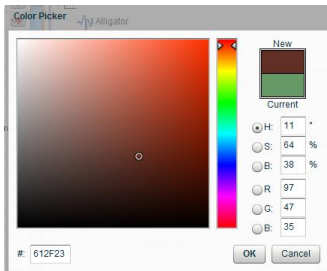
By pressing the "Delete" button you will delete the panel and its studies.

By pressing the "Clear Studies" button you will remove all of the panel's studies.

Edit a study by selecting it from the "Displayed Studies" and edit the parameters in the "Edit Parameters" window.

Edit the study's parameters, such as "period", "moving average" etc.. (when available) from the "parameters" boxes.

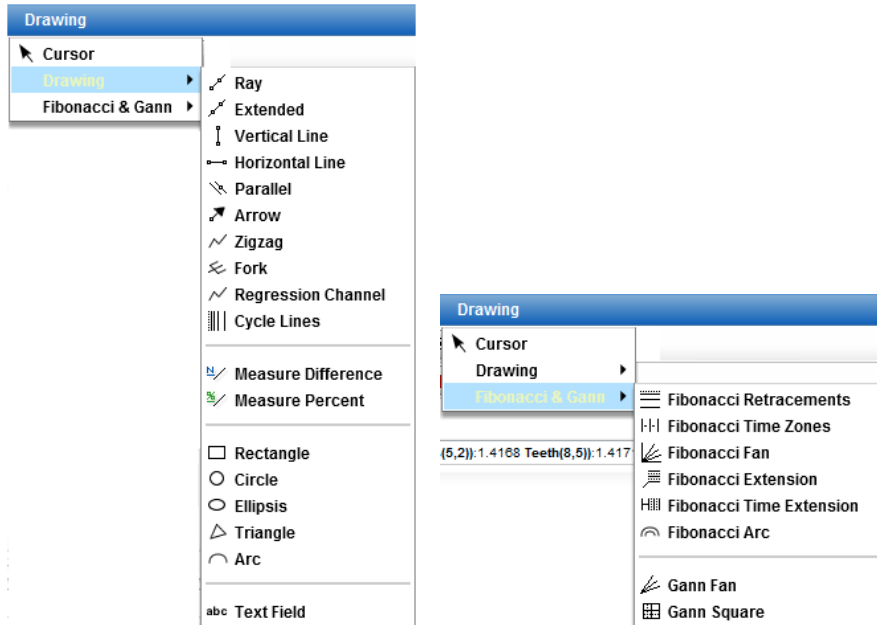
Edit the study's color and shape by pressing the color box or shape dropdown. By clicking the color box you will be able to select a color from the "Color Picker" form.



By pressing the "Delete Study" button you will remove the selected study from its panel.




2.5 Drawing



Use this menu to access to all available drawing methods.

The "Drawing" sub menu contains many drawing facilities such as lines, shapes and text.

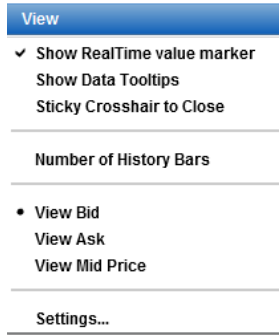
The "Fibonacci & Gann" sub menu contains advance analysis tools such as Fans, Arcs, Fibonacci Retracements, and Gann Square etc...

The "Cursor" () sub menu will cancel any drawing / zoom-range activity.

See paragraph 4 "Working Area" to learn how to edit each line or shape parameters.



2.6 View



Use this menu to access to all available settings features.

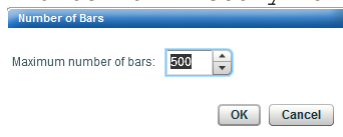
Use the "Show RealTime value marker" to enable or disable showing the line which marks the latest price value.

Use the "Show Data Tooltips" to enable or disable the display of a tooltip while you hover a specific bar. This tooltip will include all this bar's data information.

Use the "Sticky Crosshair To Close" to enable or disable the feature which cause the crosshair to magnetized to the close value of the current bar you hover with the mouse.

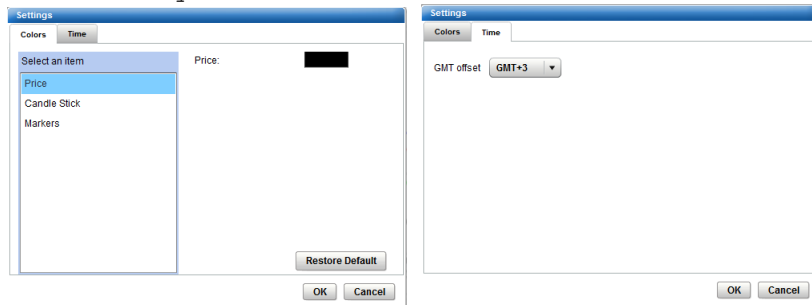


Select the number of history bars to fetch and display by pressing the "Number Of History Bars" menu.



Use the "View Bid", "Use Ask" or "Use Mid Price" menu to select which part of the trade to view. This menu is optional and customizable per each site.

Use the "Settings" menu to open the settings form. Use it to define price colors and your current Time-Zone.





2.7 Help

Help

About ProfessionalChart

Use this menu to access to the chart's page and about form.

The about form will show the version information including build number. Please use it when contacting Advinion's support team.

More information is available in www.tradeandchart.com site.





3. Toolbar

This section describes the chart's toolbar.



The thinner version (when chart's width is less or equal 520 pixels)



3.1 Current Activity



Use this entry to see the selected draw action. An arrow symbols no action.

3.2 Chart Type



Use this buttons group to fast access the commonly used chart types.

3.3 Time Scale



Use this buttons group to fast access the commonly used time-scales.

3.4 Zoom



Use this buttons group to change the zoom settings. You can Zoom-In, Zoom-Out, Zoom on a range and Cancel the Zoom () (you can also cancel the zoom-on-range by selected the "Cursor" () sub menu from the "Drawing" menu.

To zoom-in on a specific range press the "zoom-on-a-range" button (). Select the starting bar, click the left mouse button, drag the mouse and release to complete the range selection.

3.5 Drawing



Use this buttons group to fast access the commonly used drawing operations.





3.6 Systems

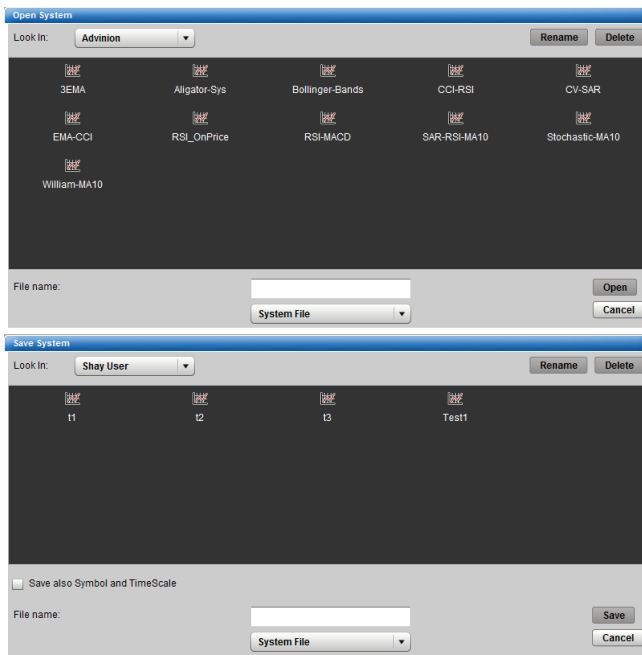
System: Bollinger-Bands



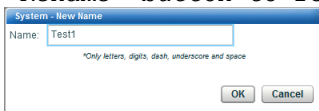
Use these buttons to load and save the technical analysis drawing data.

The open () button accesses the "Open System" form, where you can load globally defined systems and your own customized systems. The save () button let you save the current system.

3.6.1 Open and Save System

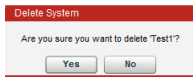


Use this dialogs to open and save your studies and drawings. Use the "Rename" button to rename the system's name. Type a name and press ok.



Use the "Delete" button to delete any system. Press the "Yes" button to

confirm.



When saving click the "Save also Symbol and TimeScale" in order to save the current symbol and time-scale with the system. The chart will change its symbol and time-scale when you'll open this system.



3.7 Crosshair



Use this button to enable or disable showing the crosshair while the mouse hover the chart.

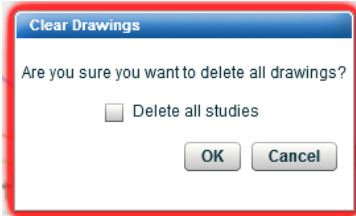
3.8 Delete



Use these buttons to delete drawings components.


The first button deletes the selected shape or line. You can also perform this action by pressing the "delete" keyboard button.

The second button deletes the entire drawing with an option to delete the studies as well by selecting the "Delete all studies" checkbox.



3.9 Print and Capture



Use the print () button to print the chart to your printer.

Use the capture () button to capture the chart's image to a file.

3.10 Detach

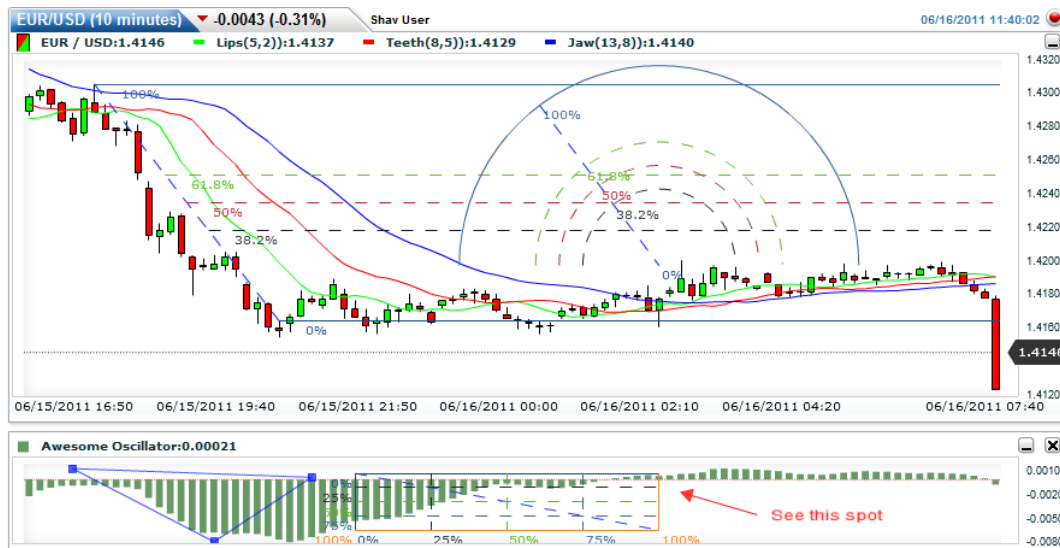


Use this button to view the chart in full screen mode or new popup window, based on the site's implementation.



4. Work Area

This section describes the chart's work area and how to use it.



4.1 Work Area Title



The top part of this area includes important information regarding the current viewed symbol.

1. Symbol name
2. Selected time-scale
3. Last tick direction
4. Changes in points from last day's close
5. Changes in percents from last day's close

Next text shows your user name after you logged-in.

Next text shows the date-time signature of the last received data in time-zone according zone definition in the "settings" form.

The last image animates whenever the chart communicates with the server.



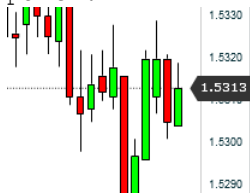
4.2 Panels

The next part contains one or more panels with chart parts inside it. The first one displays the price bars along with more available studies.

Each panel displays the values on the vertical axis which appears on the right side. When plotting several studies with different value scale a second vertical axis will appear to the left of each chart.

Only the first panel shows the date-time range on its bottom horizontal axis.

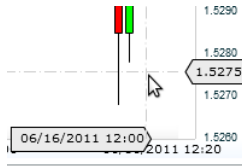
The real-time price value is seen via the real-time marker in the price-panel:



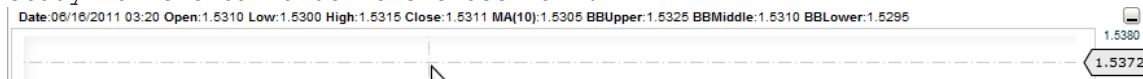
Each panel also shows the latest value per each study in its title:

GBP / AUD:1.5320 MA(10):1.5309 BBUpper:1.5348 BBSMiddle:1.5320 BBLower:1.5291

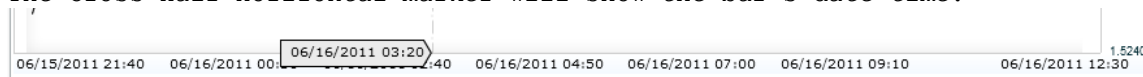
The Cross-Hair is seen via its markers:



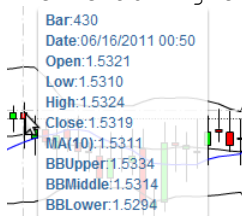
While moving the Cross-Hair each panel will show all the values per each study for the bar under the cross-hair:



The Cross-Hair horizontal marker will show the bar's date-time.



When enabling the tooltip you will see each bar's values:





4.3 Zoom - Date-Time Range selector




Use this widget to control the zoom by defining the required time-range visually.

You can perform the following actions on it:

1. Drag the left and right handles to resize the zoom area.
2. Drag the bar between handles to move the zoom range




Another way to adjust the zoom range size by scrolling your mouse roll-button inside the chart.

You can also adjust the zoom range location by scrolling the chart via clicking the mouse inside the first panel (price panel) and dragging it left or right with the mouse. You will see the hand cursor () .




4.4 Drawing

To draw inside a panel first select a drawing shape or line from the menu or toolbar. Then click inside a panel to locate the first point, and drag the mouse while holding the left button until you reach the second point. Release the button to finish locating the shape.

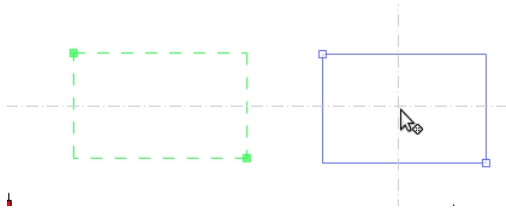
Some drawings like the "Triangle" () , "Fork" () , "ZigZag" () has more than one two handles.

To draw them start with the first two points performing the same instructions as any other shape and then press the left mouse button on each new point.


To cancel the "ZigZag" drawing you can select the "Cursor" () menu.




4.5 Selecting and Resizing Drawing Parts




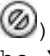
To select a line or shape hover the mouse above it and click the left mouse button.


Selected shape will have resize handles (rectangle handles ) filled with the shape's color.

Hovered shapes will have similar handles, only the inner area of the handle will be hallow (white ) .

When working with OHLC or Candlesticks you will notice that while releasing the mouse near (-5%)-(+5%) a Low, Open, Close or High the shape's handle will stick (magnet) to that value, helping you to locate the shape on these major values.

While the mouse hover a shape or line you will see the move cursor (). Press the shape and move mouse to change the shape's position.

If the locked () cursor appears then this shape is locked from moving / resizing. Use the "Edit Shape" form to unlock it.

You can also resize a shape by clicking one of its handles and dragging them with the mouse. The cursor will turn into a handle-resize shape ().

The "ZigZag" shape will actually turn into many lines. After creating it you will be able to move/resize each line separately.

4.6 Delete Drawing Parts

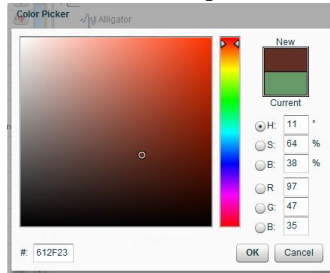
After selecting a shape or line you can press the "delete selected shape/line" button in the toolbar to erase it or click the "delete" keyboard button.



4.7 Edit Drawing Parts

Double click a shape or line to edit its properties.

Edit each shape color via the "Color Picker" form.



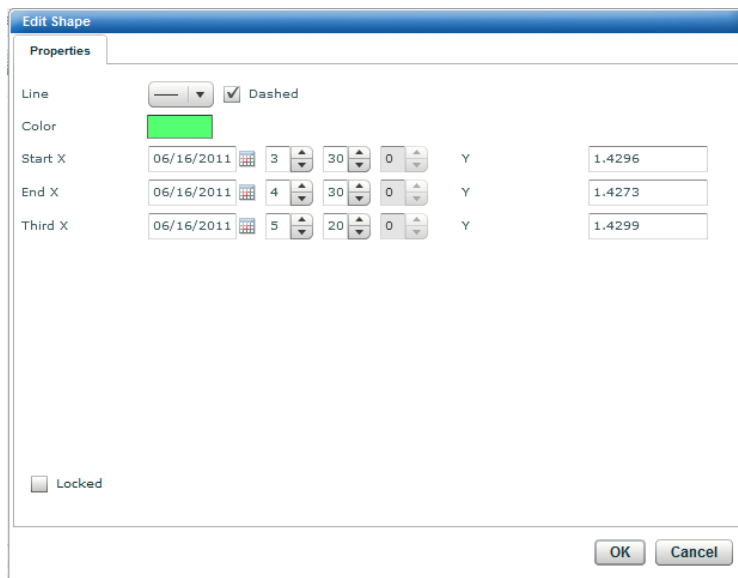
4.7.1 Shape Edit Form

Double click a shape to open the following form.

You will be able to edit each point's date-time and value.

Select line width, color and if you want it to be dashed.

Click the "Locked" checkbox to lock the shape from moving





4.7.2 Line Edit Form

Double click a line (simple or complex, such as "Fork") to open the following form.

You will be able to edit each point's date-time and value.

Select line width, color and if you want it to be dashed.

Click the "Show Labels" checkbox to show the value at each point.

Click the "Locked" checkbox to lock the line from moving

Click the "Extend Left" or "Extend Right" checkboxes to plot the line past its handles until the end of the viewable area.

Edit Shape

Properties

Line: Dashed

Color:

Start X	<input type="text" value="06/15/2011"/>	<input type="text" value="19"/>	<input type="text" value="20"/>	<input type="text" value="0"/>	Y	<input type="text" value="1.4299"/>
End X	<input type="text" value="06/15/2011"/>	<input type="text" value="21"/>	<input type="text" value="50"/>	<input type="text" value="0"/>	Y	<input type="text" value="1.4225"/>
Third X	<input type="text" value="06/15/2011"/>	<input type="text" value="23"/>	<input type="text" value="40"/>	<input type="text" value="0"/>	Y	<input type="text" value="1.4264"/>

Show Labels

Locked

Edit Shape

Properties

Line: Dashed

Color:

Start X	<input type="text" value="06/15/2011"/>	<input type="text" value="20"/>	<input type="text" value="30"/>	<input type="text" value="0"/>	Y	<input type="text" value="1.4292"/>
End X	<input type="text" value="06/16/2011"/>	<input type="text" value="1"/>	<input type="text" value="20"/>	<input type="text" value="0"/>	Y	<input type="text" value="1.4236"/>

Extend Left Extend Right

Show Labels

Locked



4.7.3 Text Edit Form

Double click a text to open the following form.

You will be able to edit each point's date-time and value.

Select the text content and color.

Click the "Locked" checkbox to lock the text from moving

Text:	Important Point	Color:	
Start X	06/15/2011 17:40:00	Y	1.4167
End X	06/15/2011 19:30:00	Y	1.4157
<input type="checkbox"/> Locked			

OK Cancel



4.7.4 Fibonacci Edit Form

Double click a Fibonacci drawing to open the following form.

Besides editing the line properties you will also have another tab called "Fibonacci" where you will be able to edit each 10'th lines.

Edit each line visibility, value, color, line-width and whether it is dashed or not.

Edit Shape

Properties **Fibonacci**

Line: [Solid] Dashed

Color: [Blue]

Start X: [06/15/2011] [20] [20] [0] Y [1.42]

End X: [06/15/2011] [23] [50] [0] Y [1.4266]

Extend Left Extend Right

Show Labels

Locked

OK Cancel

Edit Shape

Properties **Fibonacci**

Visible	Level	Color	Line	Dashed
<input checked="" type="checkbox"/>	0	[Dark Blue]	[Solid]	<input type="checkbox"/>
<input type="checkbox"/>	23.6	[Light Blue]	[Solid]	<input checked="" type="checkbox"/>
<input checked="" type="checkbox"/>	38.2	[Black]	[Solid]	<input checked="" type="checkbox"/>
<input checked="" type="checkbox"/>	50	[Red]	[Solid]	<input checked="" type="checkbox"/>
<input checked="" type="checkbox"/>	61.8	[Green]	[Solid]	<input checked="" type="checkbox"/>
<input type="checkbox"/>	78.6	[Pink]	[Solid]	<input checked="" type="checkbox"/>
<input checked="" type="checkbox"/>	100	[Dark Blue]	[Solid]	<input type="checkbox"/>
<input type="checkbox"/>	127.2	[Red]	[Solid]	<input checked="" type="checkbox"/>
<input type="checkbox"/>	161.8	[Light Green]	[Solid]	<input checked="" type="checkbox"/>
<input type="checkbox"/>	261.8	[Orange]	[Solid]	<input checked="" type="checkbox"/>

OK Cancel



4.7.5 Gann Edit Form

Double click a Gann drawing to open the following form.

Besides editing the line properties you will also have another tab called "Gann" where you will be able to edit each ten lines.

Edit each line visibility, value, color, line-width and whether it is dashed or not.

Edit Shape

Properties **Gann**

Line: Dashed

Color:

Start X: Y

End X: Y

Show Labels

Locked

OK Cancel

Edit Shape

Properties **Gann**

Visible	Level	Color	Line	Dashed
<input checked="" type="checkbox"/>	<input type="text" value="0"/>	<input type="color" value="darkblue"/>	<input type="text" value="—"/>	<input type="checkbox"/>
<input type="checkbox"/>	<input type="text" value="12.5"/>	<input type="color" value="lightblue"/>	<input type="text" value="—"/>	<input checked="" type="checkbox"/>
<input checked="" type="checkbox"/>	<input type="text" value="25"/>	<input type="color" value="black"/>	<input type="text" value="—"/>	<input checked="" type="checkbox"/>
<input type="checkbox"/>	<input type="text" value="38.2"/>	<input type="color" value="red"/>	<input type="text" value="—"/>	<input checked="" type="checkbox"/>
<input checked="" type="checkbox"/>	<input type="text" value="50"/>	<input type="color" value="green"/>	<input type="text" value="—"/>	<input checked="" type="checkbox"/>
<input type="checkbox"/>	<input type="text" value="61.8"/>	<input type="color" value="pink"/>	<input type="text" value="—"/>	<input checked="" type="checkbox"/>
<input checked="" type="checkbox"/>	<input type="text" value="75"/>	<input type="color" value="blue"/>	<input type="text" value="—"/>	<input checked="" type="checkbox"/>
<input type="checkbox"/>	<input type="text" value="78.6"/>	<input type="color" value="orange"/>	<input type="text" value="—"/>	<input checked="" type="checkbox"/>
<input type="checkbox"/>	<input type="text" value="87.5"/>	<input type="color" value="lightgreen"/>	<input type="text" value="—"/>	<input checked="" type="checkbox"/>
<input checked="" type="checkbox"/>	<input type="text" value="100"/>	<input type="color" value="orange"/>	<input type="text" value="—"/>	<input type="checkbox"/>

OK Cancel